

---

# SERVICE BULLETIN

Maintenance of Way Equipment



---

## Product Service Bulletin ENC 15.05

---

Date: June 23, 2022

Subject: **RTP Wiper Arm Replacement**

Rating:  **Alert** (Potential problem)  **Directive** (Action is required)  
 **Information** (Action is optional)  **Product Improvement** (Enhance product)

Model: Ride On Tie Plugging Machine

New Part Numbers: E04003644 (Wiper Blade) / E04003660 (Wiper Arm)

Discontinued Part Numbers: E04003549 (Wiper Blade) / E04003550 (Wiper Arm)

Summary: Encore is upgrading the wiper arm and blade on the front and back panels of all Ride On Tie Plugging Machine models. The new model is a more robust, heavy duty wiper arm and blade.

Action: Any orders after September 15, 2022 will be the updated wiper blade and arm. Please note the below steps to installing the new system. Contact Encore with any questions.

---

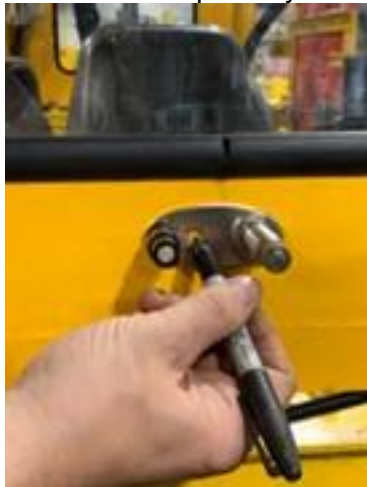
## Encore Product Service Bulletin ENC 15.03

---

New Wiper Blade and Arm:



Step 1: Mark and center punch your hole.



Step 2: Drill a hole for a 10-24x1 counter sink socket head cap screw.



Step 3: Place your bolt through the wiper arm bracket and window panel. Tighten down bolt until wiper arm bracket is secured.



Step 4: Take your wiper arm and align holes with mounting bracket. Tighten down both bolts on wiper arm.



Step 5: Take your “J” hook and place wiper blade in bracket. Pull up to secure wiper blade to wiper arm.

